

# A Publication of SOAR-NET (Southwestern Ohio Area Research Network)

## THE SOAR-NET SENTINEL



Fall 2006  
Volume 3, Issue 1

### Social Capital Study



In September 2006 SOAR-NET began its most ambitious study to date. Funded by an award from The Children's Medical Center of Dayton Research Foundation, study participants will include colleagues in Dayton Children's Developmental Pediatrics Clinic (led by Dr. Eileen Kasten) as well as primary care members of the network. The initial parent survey will include several instruments, including University of Michigan (U of M). Mentored by faculty within the U of M's Institute for Social Research, Dr. Looman created a 20 item scale that has been validated with several hundred families who are raising children with special health care needs. This will be the first study that employs the new scale in a primary care setting. Following completion of the parent survey, the charts of the "index" children will be reviewed for the preceding 12 months for their parents' child health behaviors (e.g., office phone calls, immunizations, number of well/problem visits).

#### Contents

Social Capital Study	1
2006 - 2007 Events	1
Developmental Screening	2
Rocking Horse Award	2
Maternal Mental Health	2
MRSA Study	3
Fever Study	3
Mission Statement	4
Our Members	4

A number of aphorisms from across the globe reflect the idea that the community is important for the well-being of the individual—"Rich together, poor if separated" (Laos), "One finger cannot lift a pebble" (Iran), "United we stand, divided we fall" (United States). The concept of social capital is usually expressed in terms of social networks, norms and reciprocity. In all definitions of social capital, trust and reciprocity or cooperation emerge as important elements.<sup>1</sup> In his ground-breaking book, *Bowling Alone*, Robert Putnam suggested that trust and cooperation are developed over time by repeated interaction of people involved in long-term relationships supported by community institutions.<sup>2</sup>

This SOAR-NET study should begin to help us understand more about how the level of parents' connectedness to their communities influence their health related behaviors for their children.

If you would like to participate in this important study, please call Greg Eberhart (885-4475) or Jack Pascoe (641-3277).

### 2006 - 2007 Events

- ◆ October 7-10, 2006, American Academy of Pediatrics NCE, Atlanta
- ◆ November 4-8, 2006, American Public Health Association, Boston
- ◆ May 5-8, 2007, Pediatric Academic Society, Toronto
- ◆ May 16- May 18, 2007, National PBRN Research Conference, Washington, D.C.

## Developmental Surveillance and Screening Policy Implementation Project (D-PIP)



Ohio Pediatrics, Inc. is one of 17 pilot primary care practices to implement the AAP policy statement “Identifying Infants and Young Children with Developmental Disorders in the Medical Home: An Algorithm for Developmental Surveillance and Screening” to determine if the use of the policy, specifically, the algorithm, changes the delivery of developmental surveillance and screening. In particular, the project aims to determine strategies for implementing the algorithm, and examine outcomes of implementing the algorithm. Following the project, information will be shared with pediatric clinicians and other health care professionals who are seeking to improve the delivery of developmental surveillance and screening.

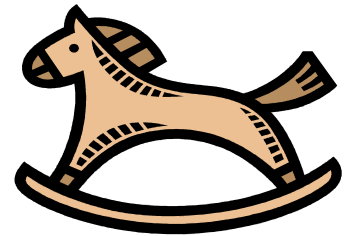
For more information on the D-PIP visit:

<http://www.medicalhomeinfo.org/screening/DPIP.html>

## Rocking Horse Center Award Winner

### CONGRATULATIONS!

Congratulations to Rocking Horse Center, the winner of the 2006 APA Health Care Delivery Award! Directed by **James Duffee**, from Wright State University Boonshoft School of Medicine, Rocking Horse is located in Springfield, Ohio, a health profession shortage area. The Center opened in 1999 and has a mission to help raise healthy children in caring families. It provides universal access to enhanced, developmentally-based medical care in a child-friendly and family-centered environment. Today the Center serves over 9,000 mostly low income children who generate nearly 25,000 visits annually. Highlights of the many services offered include enhanced, onsite developmental and mental health care through Healthy Steps for Young Children, child advocacy for abused children, care coordination for children with special health care needs, community outreach, participation in our practice-based research network, and community pediatrics training for students and residents. For further information, please visit their website at [www.rockinghorsecenter.org](http://www.rockinghorsecenter.org).

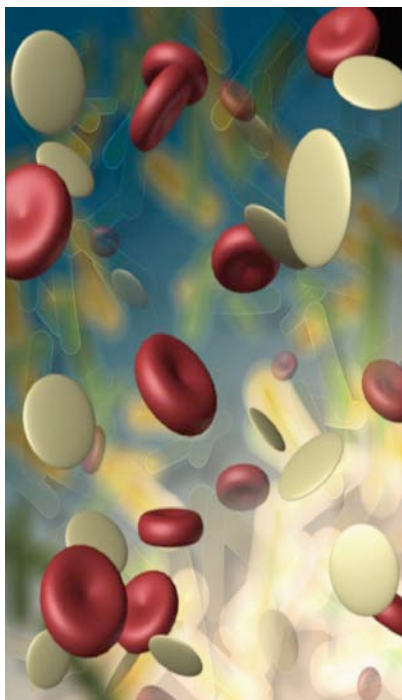


## Maternal Mental Health Study



SOAR-NET is participating in a study of Maternal Mental Health in the Ohio Pediatric Research Consortium. The survey-based Maternal Mental Health study is underway and we have completed data collection at several sites. The goal of this study is to improve health care providers' awareness about maternal depression and to increase screening and referral of mothers who are at risk for depression. Participating clinicians recruit mothers to review a resource guide and complete a short survey to provide feedback about the guide's utility. The resource guides provide local and statewide listings of supportive services available. Data collection will continue at The Rocking Horse Center (Springfield, OH), The Children's Health Clinic (CMC) and Ohio Pediatrics, Inc. through the end of September 2006.

## Potential Projects



### Current Practices in Treating Empiric Staphylococcal and Streptococcal Skin and Soft Tissue Infections in Children

SOAR-Net is collaborating with the Cincinnati Pediatric Research Group on a study analyzing the practice patterns of clinicians in dealing with potential MRSA infections in an office setting. Staphylococcus Aureus and Group A Streptococcus are the most common pathogens in skin and soft tissue infections in children. In the past, empiric treatment for these infections was relatively straightforward. Most practitioners either used a cephalosporin or expanded spectrum penicillin based antibiotic and could reliably predict that the organism would be sensitive. More recently, emerging resistance and increased virulence of S. Aureus has led to increased severity of disease, more hospitalizations and led practitioners to change their empiric treatment of these infections. There is little information, however, on how practitioners are actually treating these infections in children and how various empiric regimens affect outcome.

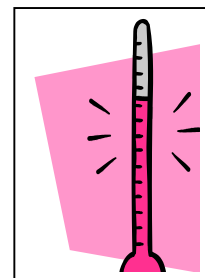
An initial part of this endeavor would be to survey clinicians in the community to assess how they are currently approaching this problem in their offices. The next part of the study would be an ongoing surveillance of actual practices of clinicians and tracking outcomes of their interventions.

If you are interested in participating in this study, please contact Greg Eberhart at 937-885-4475.

### Parent's Attitudes About Managing Fever

Dr. Shalini Forbis of the Children's Health Clinic is piloting a study that analyzes parental attitudes about the identification and treatment of fever in infants and children. As one of the leading causes of parental anxiety and after hours calls to pediatricians, knowledge about parental attitudes can be vital to developing strategies to better educate parents about fever.

SOAR-Net is looking to expand this study to include members of our network. Please contact Greg Eberhart at 937-885-4475 if you are interested in participating in this study.



### Future Projects For SOAR-Net

The members of SOAR-Net encourage

## Our Mission

SOAR-NET is a young and growing group of pediatricians and family medicine practitioners associated with Wright State University and Children's Medical Center in Dayton, Ohio. Our mission is to support our members to design and carry out office based clinical research of importance and interest to our members, and in turn we believe to other primary care providers and those involved in formulating health policy. As primary care providers at the forefront of clinical medicine,

participating pediatricians and family physicians are in a unique position to formulate and research clinically relevant questions about diagnosis, prevention and intervention strategies in common childhood illnesses. Currently there is a lack of evidence and wide knowledge gaps regarding many facets of medicine that can be easily examined by broad based clinical networks of offices such as ours, located throughout

Dayton in a variety of socioeconomic areas (urban, suburban, rural and military-based).

Our research network supports its members in formulating clinical questions and provides support in study design and statistical analysis of data.

Interested in more information?  
Call:

*Susan Howard at  
(937) 641-3277*

## Our Members

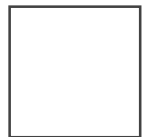
The participating practices of the Dayton primary Care PBRN have one thing in common; they are diverse.

Children's Health Clinic  
Community Child Health Centers  
Cornerstone Pediatrics  
Indian Ripple Family Health Center

Ohio Pediatrics, Inc.  
PriMed Physicians of Dayton  
Rocking Horse Center  
South Dayton Pediatrics  
University Medicine-Pediatrics  
WPAFB Pediatric Clinic  
Yellow Springs Family Health Center

We're on the Web!  
[www.med.wright.edu/dpcbrn](http://www.med.wright.edu/dpcbrn)

Dayton Primary Care PBRN  
c/o John Pascoe, M.D., M.P.H.  
WSU Dept. of Pediatrics  
One Children's Plaza  
Dayton, OH 45404



**NAME/ADDRESS**